



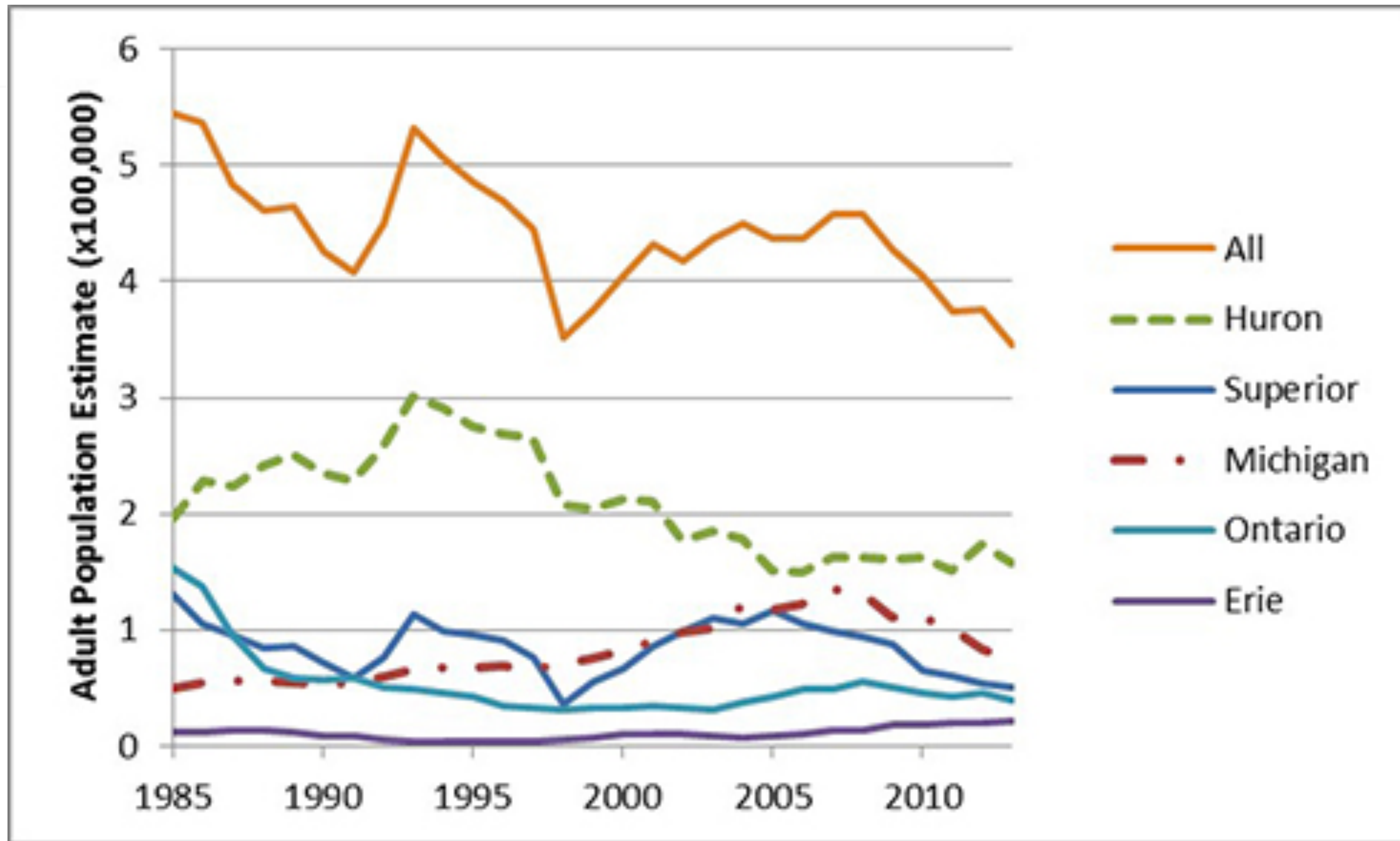
# TrawlExpert

A TOOL FOR ENVIRONMENTAL SCIENTIFIC RESEARCH

CHRIS SCHANKULA



# Declining Fish Populations

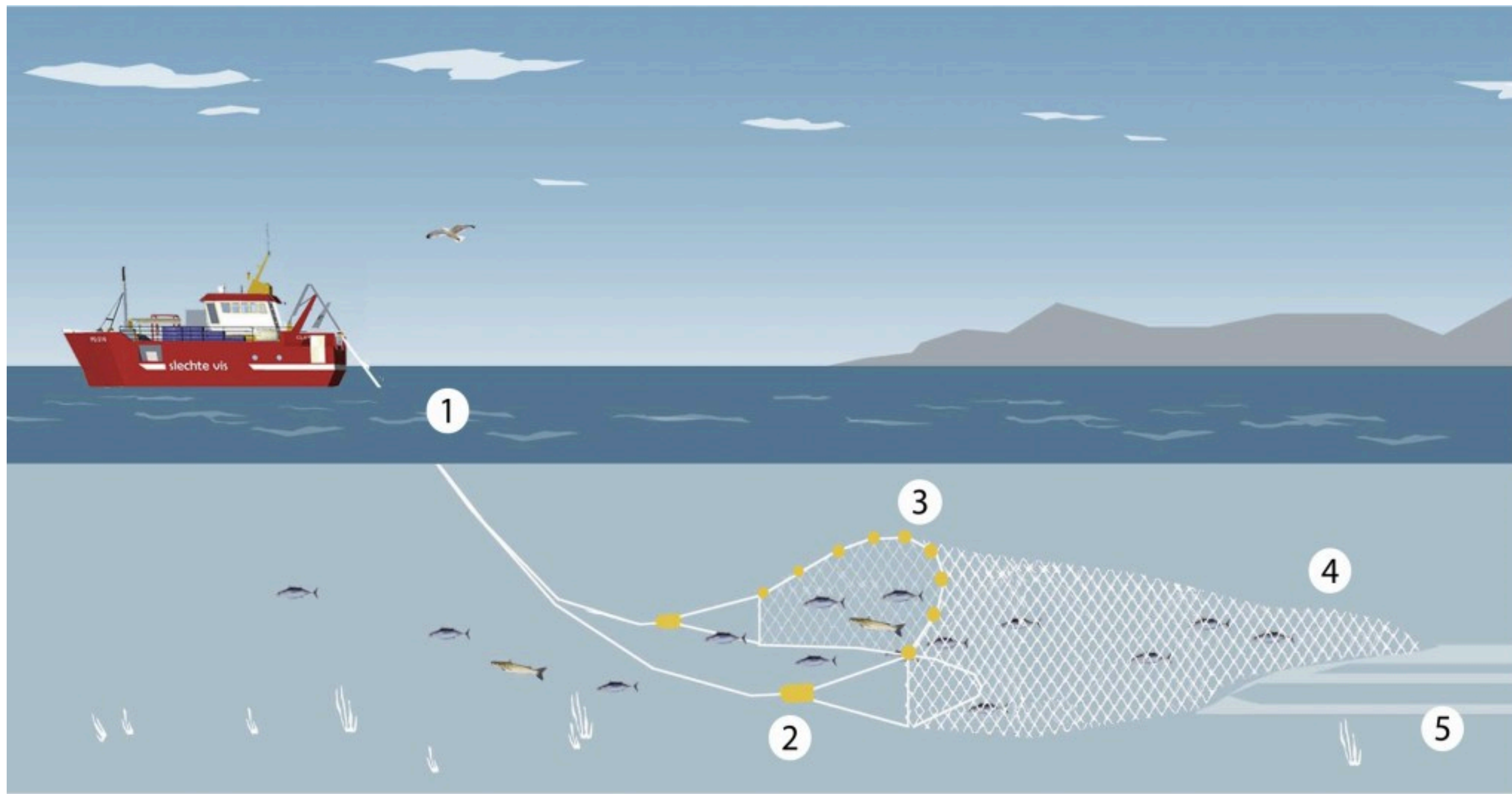




# Trawl Surveys



- Used to estimate relative fish population, births, deaths, etc. over time
- USGS dataset contains over 283,000 records from 1958-2016



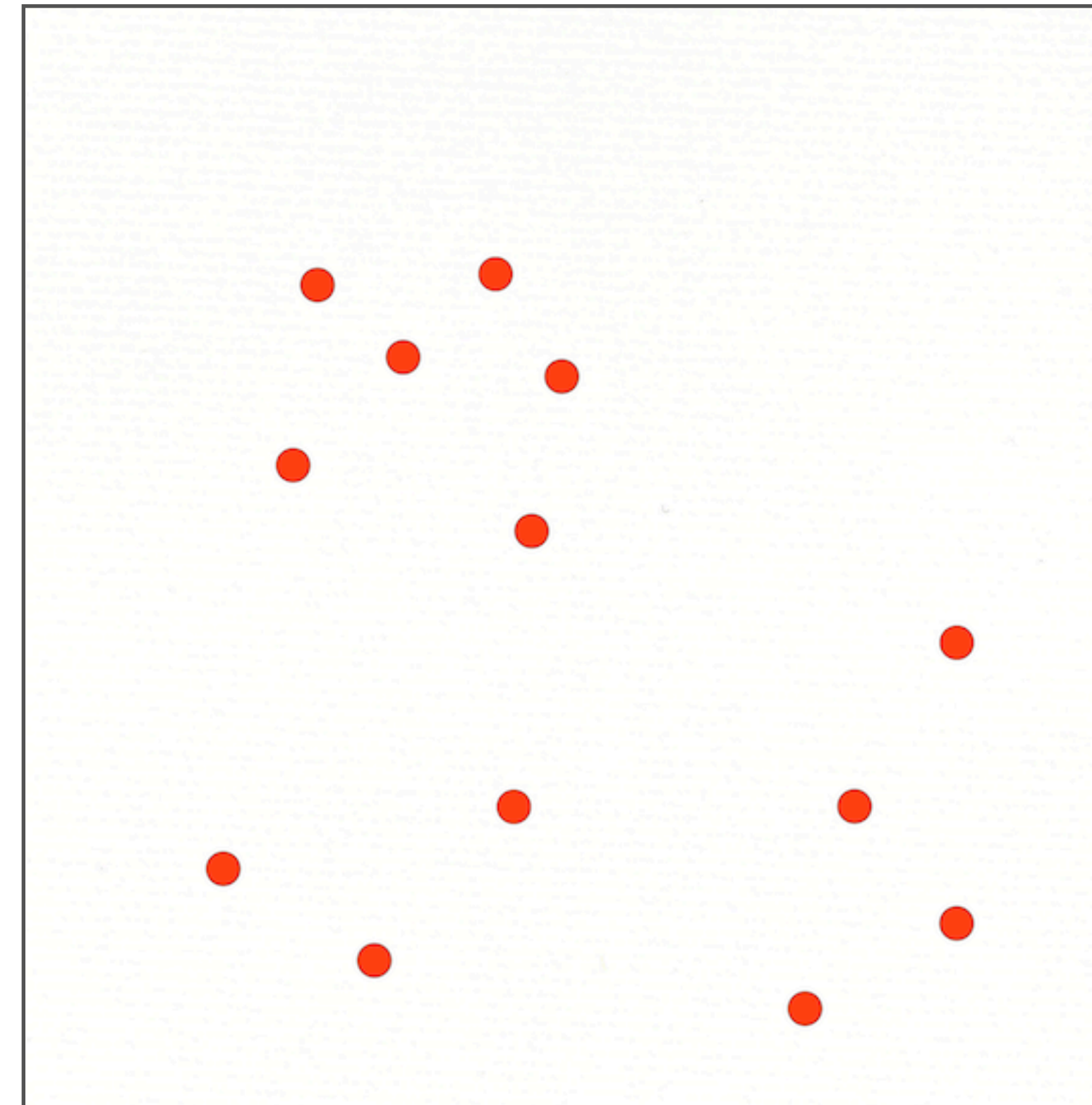
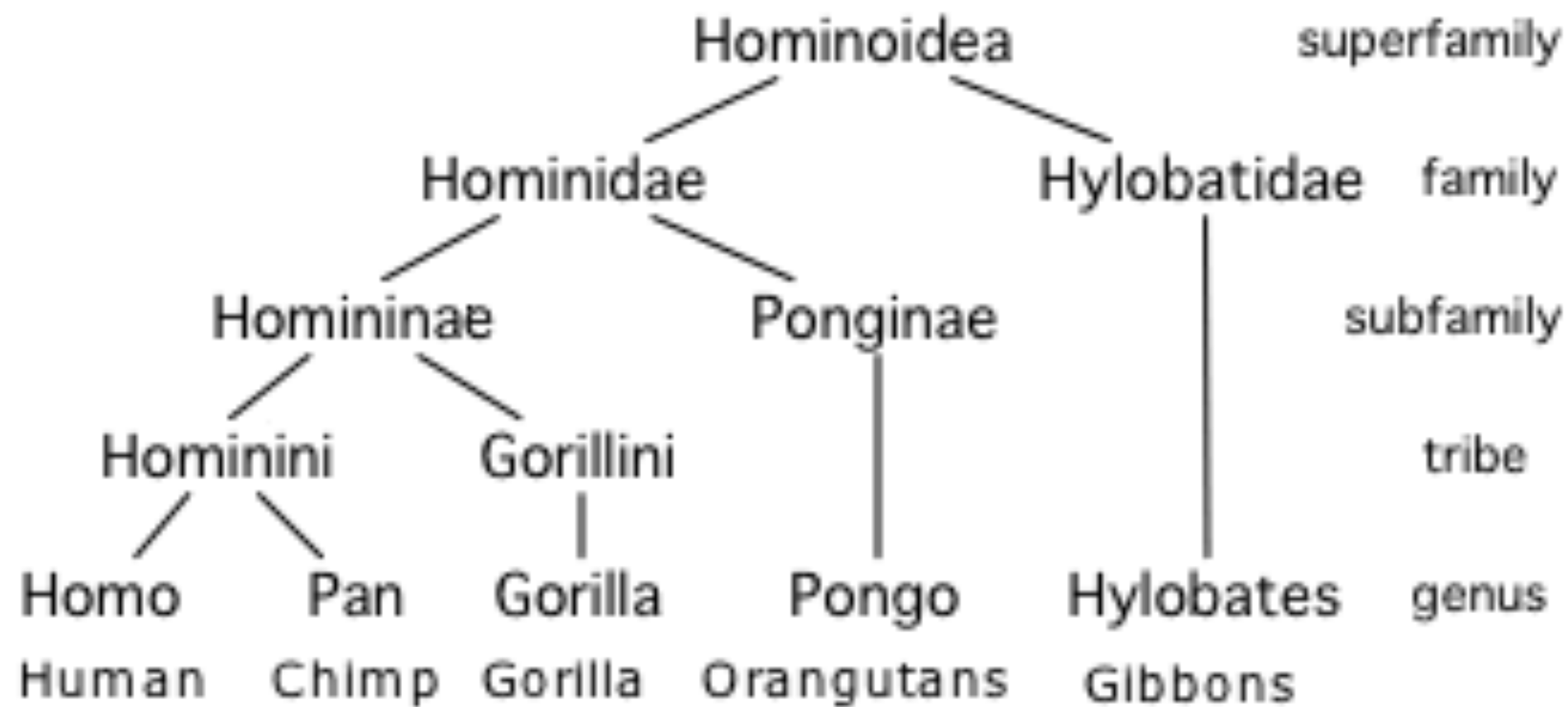
1. Tow ropes 2. Gates keep the mouth of the net open 3. Floats 4. The cod end where the fish collect  
5. Trawl marks left from the weights dragging over the sea floor





- Domain-specific tools for extracting and classifying relevant data
- Researcher can focus attention on analysis

## Modern Hominoid Classification

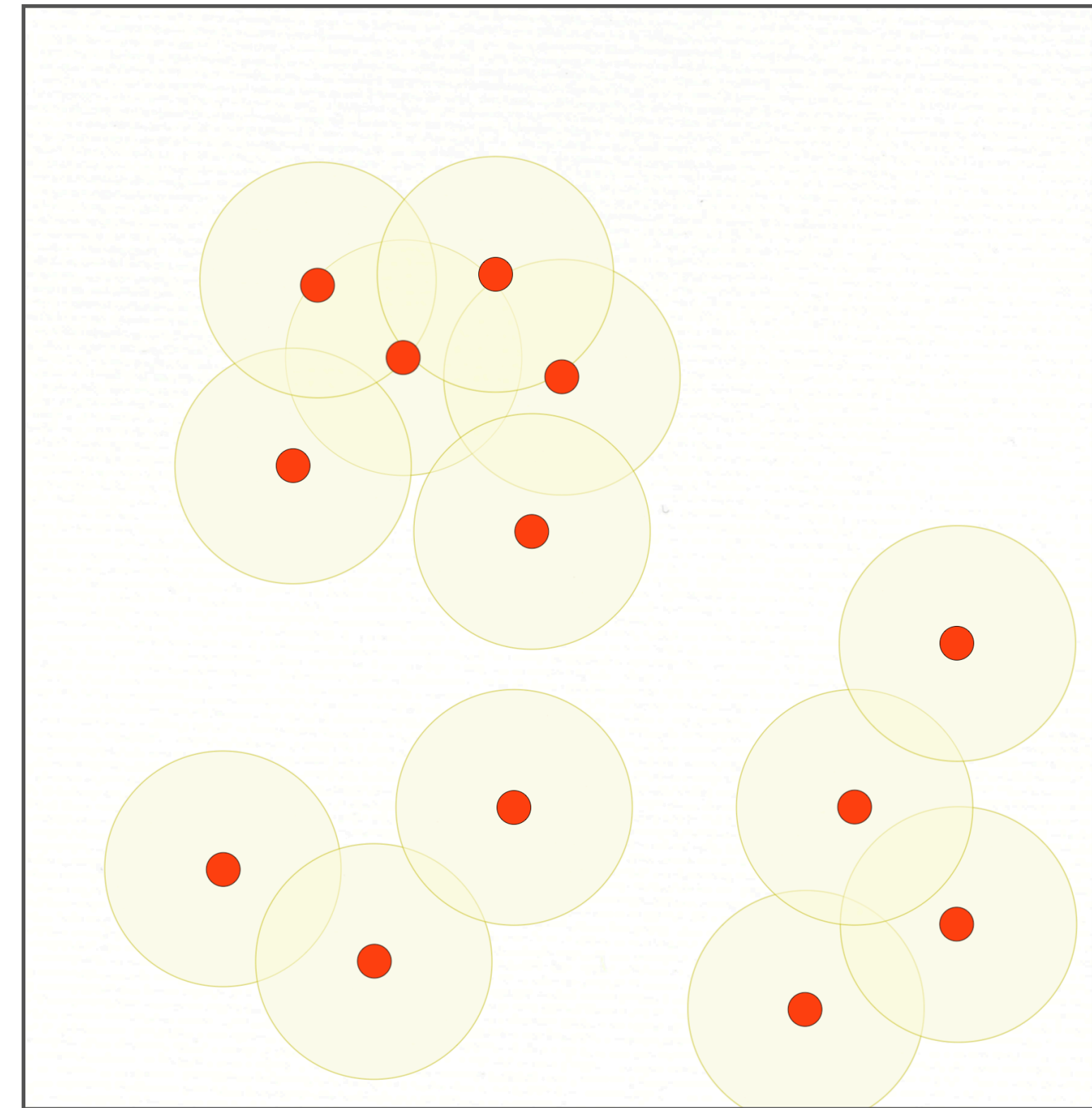
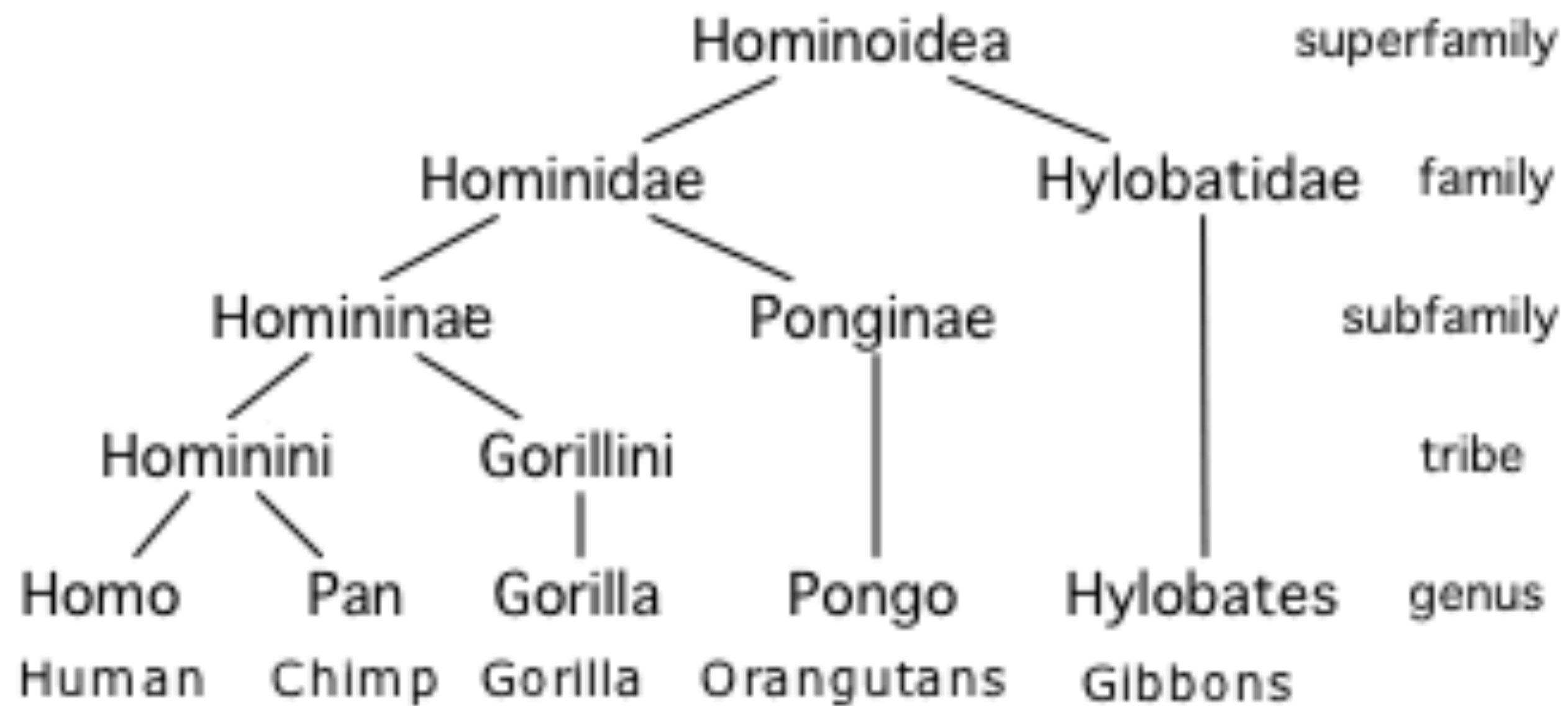






- Domain-specific tools for extracting and classifying relevant data
- Researcher can focus attention on analysis

## Modern Hominoid Classification

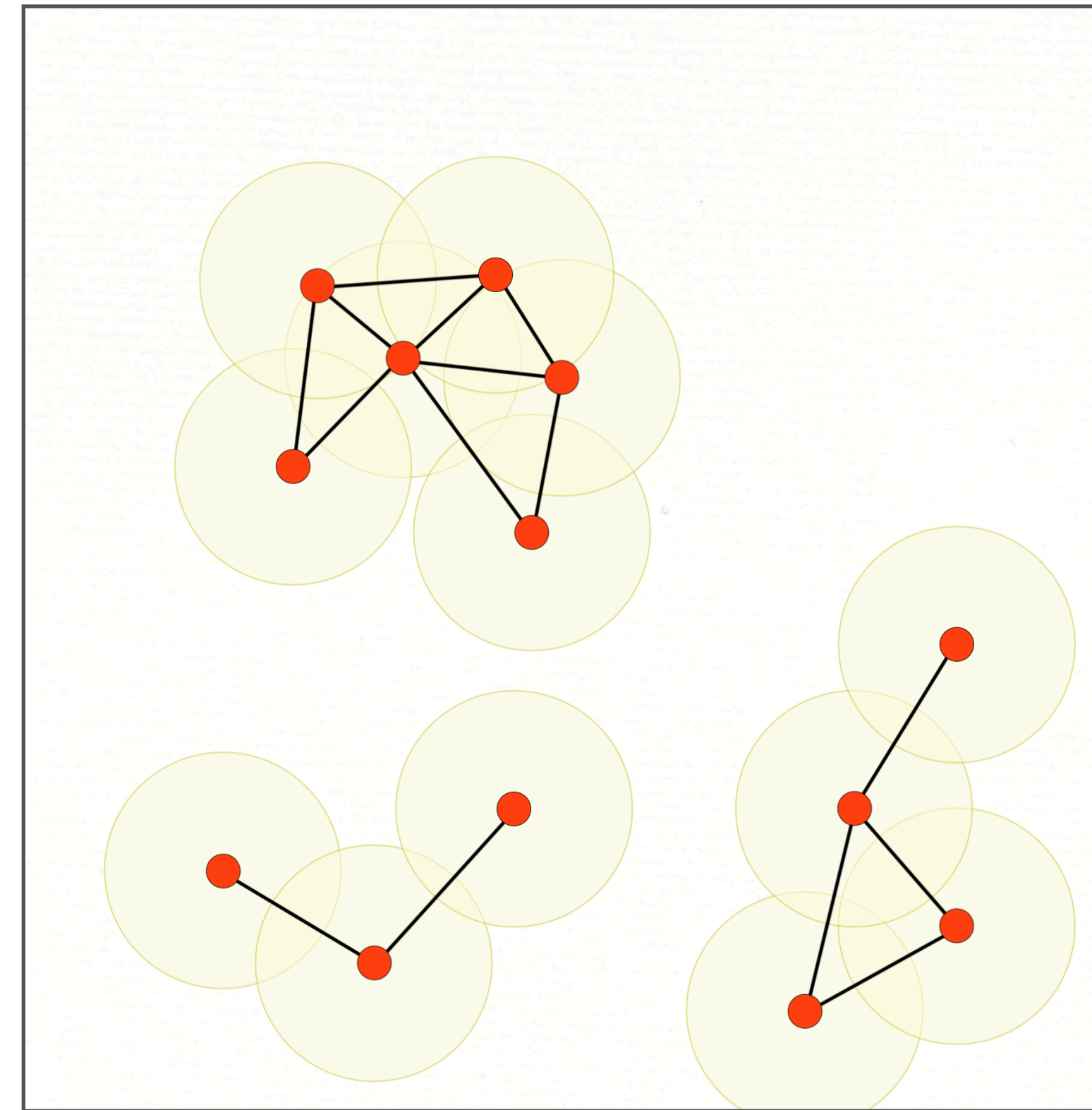
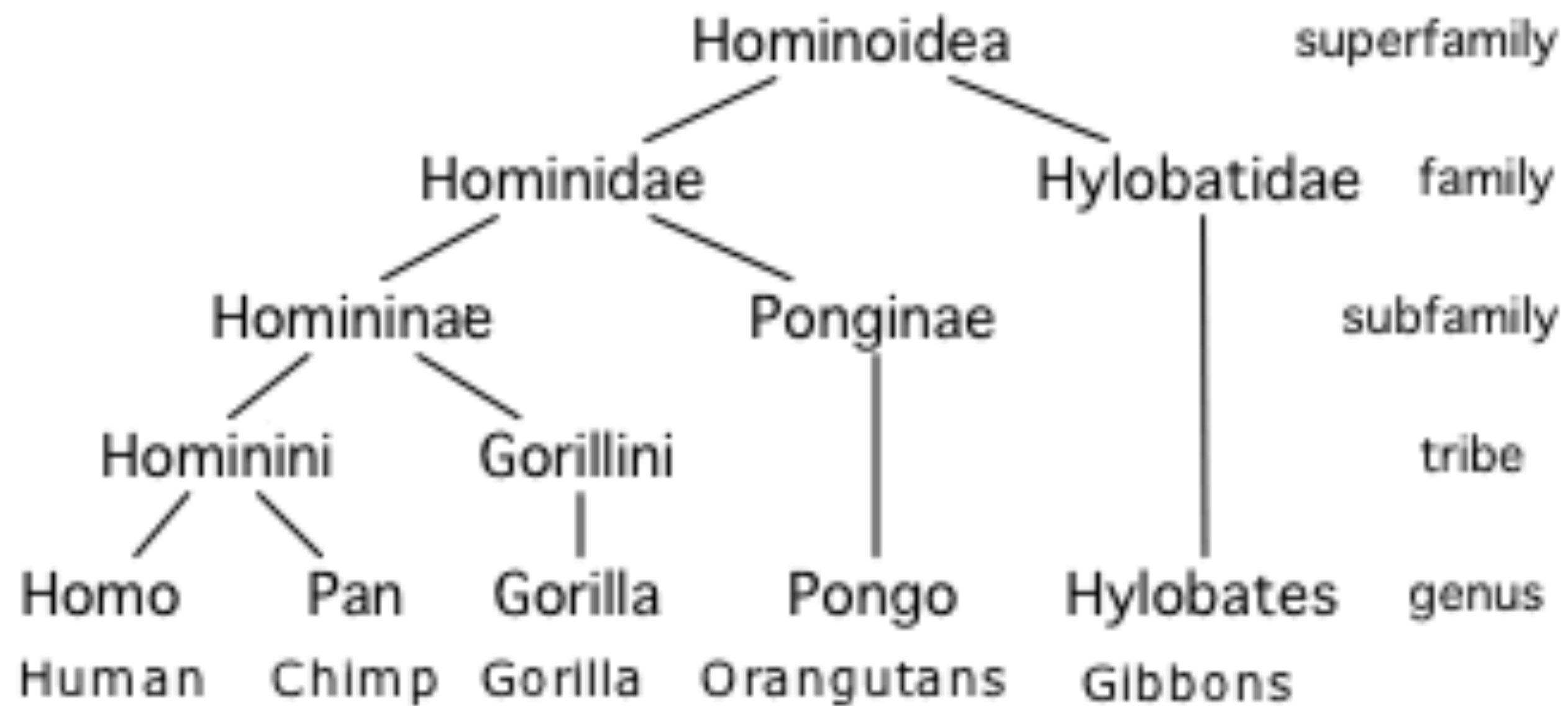






- Domain-specific tools for extracting and classifying relevant data
- Researcher can focus attention on analysis

## Modern Hominoid Classification

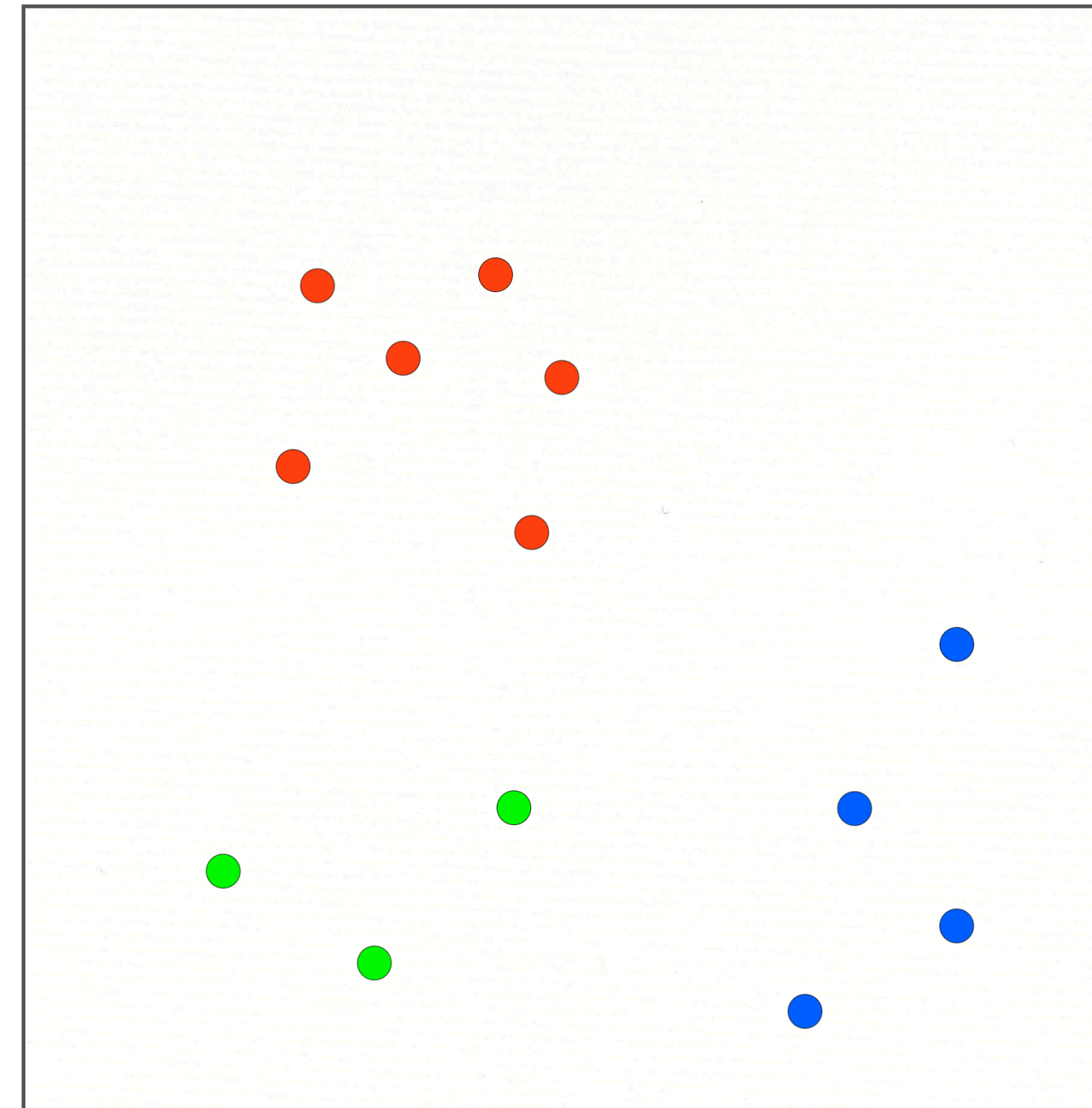
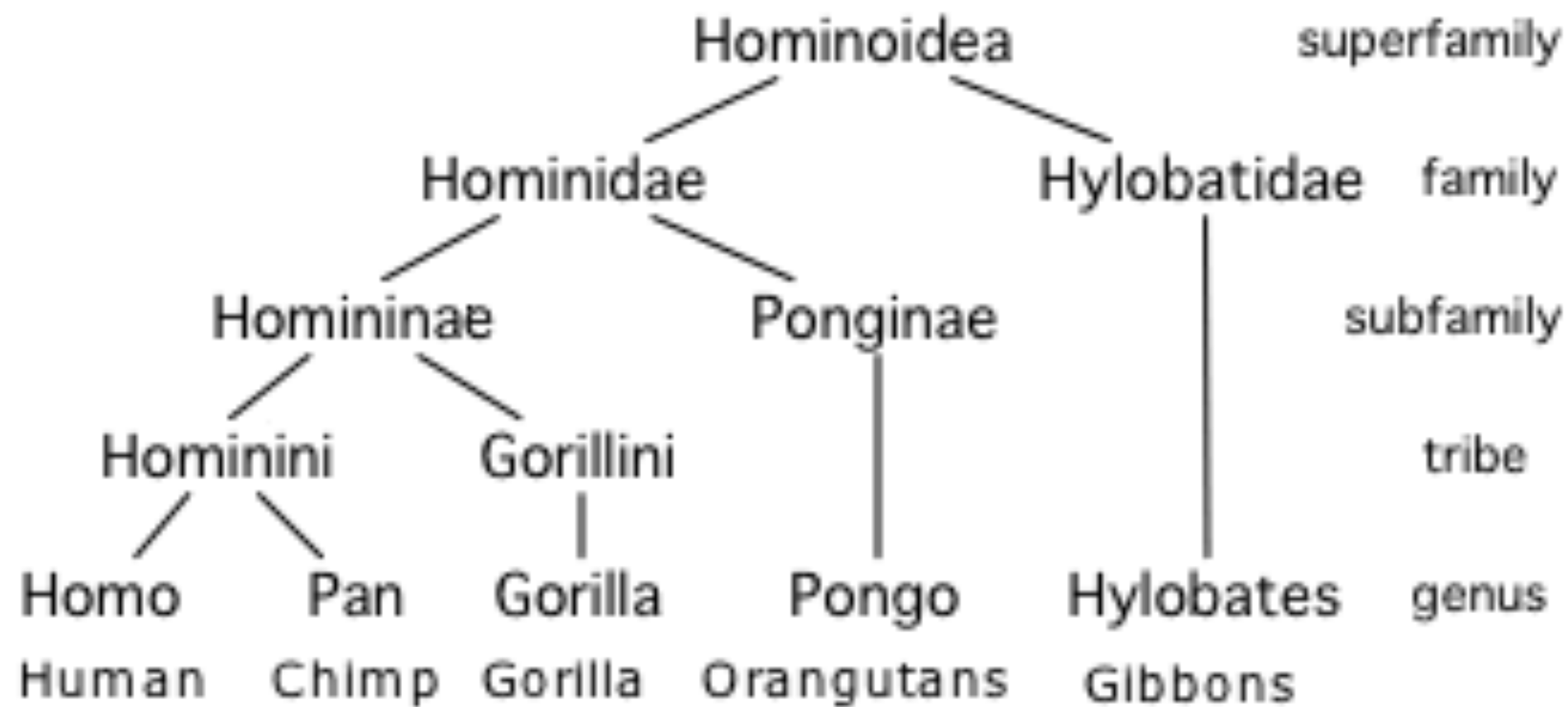






- Domain-specific tools for extracting and classifying relevant data
- Researcher can focus attention on analysis

## Modern Hominoid Classification







## Chris Schankula TrawlExpert

This was an interesting project and if it was one of the projects in my team, I would have liked to implement it.

- A. STRONGLY DISAGREE
- B. DISAGREE
- C. NEITHER AGREE NOR DISAGREE
- D. AGREE
- E. STRONGLY AGREE